



EUROPEAN
COMMISSION

Community research

Mapping the NANOTEchnology innovation system of Russia for preparing future cooperations between the EU and Russia/NANORUCER

Project objectives

1. Mapping of nanotechnology and nanostructured materials activities in Russia
2. Assessing the capacities of Russian NN R&D activities in order to identify strengths and weaknesses
3. Identifying opportunities for cooperation and developing recommendations and a specific action plan





EUROPEAN
COMMISSION

Community research

NANORUCER

Approach

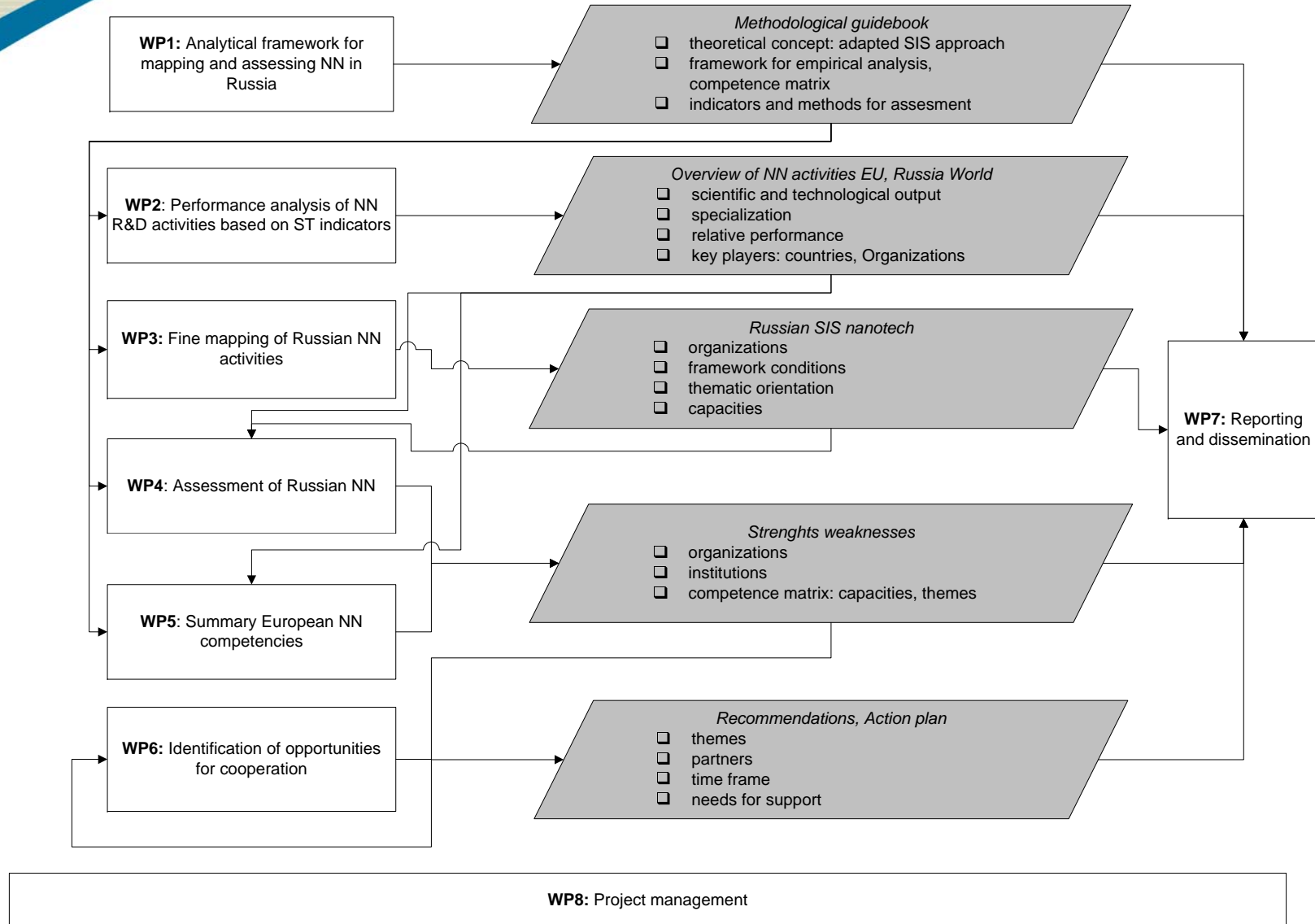
1. Develop analytical framework based on SIS concept
2. Comparative performance analysis of the Russian NN SIS
3. Fine mapping of NN SIS in Russia
4. Assessment of capacities of Russian NN SIS
5. Summary of European competencies in NN
6. Identification of opportunities for cooperation and joint activities, development of concrete action plan
7. Dissemination among stakeholder groups

SIS: sectoral system of innovation





Approach





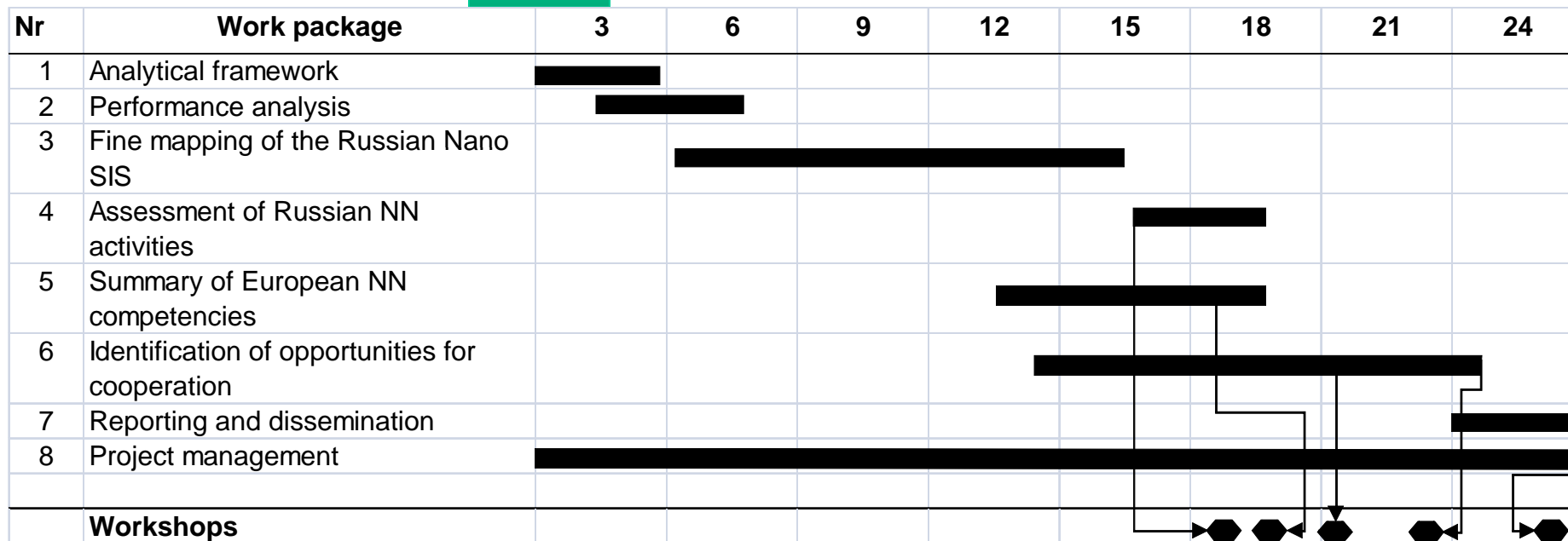
EUROPEAN COMMISSION

Community research

NANORUCER

Workplan

Sept.
2009



SIS: sectoral system of innovation





EUROPEAN
COMMISSION

Community research

NANORUCER

Results and expected impact

1. Databases of actors of the Russian NN SIS
2. Action plan for future joint research activities: call topics for next 2-3 years and call roadmap for next 7-10 years
3. Improved knowledge of Russian research capacity in nanotechnology
4. Reliable information to paving the way for future EU-Russia cooperation
5. Increase cooperation between EU and Russian organizations.

SIS: sectoral system of innovation





EUROPEAN
COMMISSION

Community research

NANORUCER

Partners

Fraunhofer-Gesellschaft zur Förderung der Angewandten Forschung e.V. (Fraunhofer): Fraunhofer Institute Systems and Innovation Research (Fraunhofer ISI),

Establishment of the Russian Academy of Sciences the Institute for the Study of Science of Russian Academy of Sciences (ISS RAS)

Contact:

Dr. Thomas Reiss, Fraunhofer ISI, Karlsruhe, Germany:
thomas.reiss@isi.fraunhofer.de

Duration: 24 months; project start: Sept. 2009

